

DIGITAL PANEL METERS

Electrical measurements 20000 points VNE 20



VNE 20 panel meter are characterised by their high accuracy and resolution. They permit the measurement hold by external command and have an analog output. The dot position can be selected by external command.

- Dimensions : 96 x 24 mm
- Built-in line power supply
- Display : 14 mm red, green or yellow LED

Functions

Function	Gauge	Resolution	Accuracy (1)	Input impedance	Remarks
DC Voltage	200 mV	100 μ V	0,05 % + 20 μ V	> 100 M Ω	
	2 V	1 mV	0,05 % + 0.2 mV	> 100 M Ω	
	20 V	10 mV		1,1 M Ω	
	200 V	100 mV	0,05 % + 20 mV	1,1 M Ω	
	650 V	1 V	0,05 % + 0,2 V	1,1 M Ω	
Process signals with scaling	0 - 5 V	Display \pm 20000	0,05 % of scale end + 2		The input and the scale are defined at the order and can't be modified by the user
	0 - 10 V	points			
	4 - 20 mA	For scale begin and end			
	0 - 20 mA				

(1) En \pm (% of reading + number of units) at 23 \pm 1°C for 1 year.

General characteristics

Display.....
20000 measurement points (4 ½ digits),
Red, green or yellow LED,
height : 14 mm, with brightness adjustment.

Automatic polarity and zeroing.

Measurement rate.....
2.5 measurements per second

Measurement hold and dot commutation.....
By external command

Temperature coefficient.....
 $\leq (0.01 \% + 0.2) / ^\circ\text{C}$

Analog output.....
On all models
0.1 mV / digit, non isolated output.

Common mode acceptable.....
250 V - or ~.

Overload acceptable.....
250 V – or ~.

Operating conditions.....
Nominal field of use : 0 to + 50 °C
Limit field of use : -10 to + 50°C

Rejection rate at 50 Hz.....
Serial mode : 80 dB
Common mode : 140 dB

Operating conditions.....
Nominal field of use : 0 to +50°C.
RH : 20 to 80 % without condensation.
Limit field of use : -10 to +50°C.

DIGITAL PANEL METERS

Power supply.....

230 V~ ($\pm 10\%$) 50 to 60 Hz

Other power supplies :
 6 V- $\pm 20\%$ non insulated,
 5 V- $\pm 10\%$ insulated,
 9 to 18 V- insulated,
 18 to 36 V- insulated,
 36 to 72 V- insulated,
 24 V~ $\pm 10\%$ insulated,
 48 V~ $\pm 10\%$ insulated,
 115 V~ $\pm 10\%$ insulated.

Other on request.

Consumption.....

4VA max.

Presentation.....

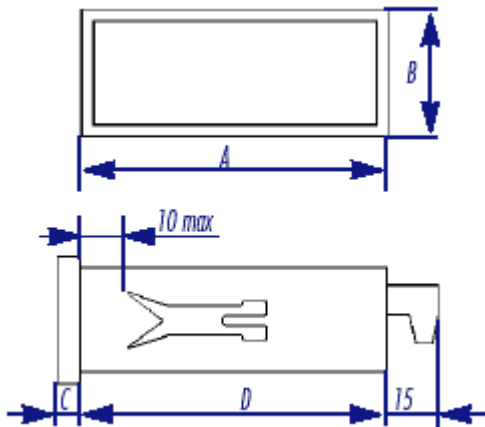
ABS case.
 IP40 Impervious.
 Weight : 300 g.

Connection.....

Removable screwing connector

Dimensions

Dimensions unit : mm



Case	A	B	C	D	Panel cut
96 x 24	96	24	5	103	$92^{+0.8}_0 \times 22.2^{+0.3}_0$

Instructions to order

Digital panel meter VNE 20

References
to refer above

Direct voltage

200 mV	V12
2 V	V13
20 V	V14
200 V	V15
650 V	V16

Process signals with scaling (4-20 mA/0-10 V/0-5 V)

D20

Display

Red	R
Green	V
Yellow	J

Power supply

6 V	1
5 V	2
9 to 18 V	3
18 to 36 V	4
36 to 72 V	5
24 V	6
115 V~	7
230 V~	8
48 V~	9
Special	0

AOIP
 BP 182
 91133 Ris Orangis CEDEX
 FRANCE
 +33 169 028 900
 www.aoip.com



SOFIMAE laboratory on our premises of Ris-Orangis
 *Ranges available on www.cofrac.fr